



PCM
£895 PCM
Arundel Close
Warwick, CV34 5HZ

PROPERTY SUMMARY

**** Bills Included**** A Beautifully presented, spacious double bedroom to rent in this Unique shared house. The room itself is situated on the top floor and has its own walk in shower. The room is furnished throughout, and has ample storage. There is use of the modern communal lounge & kitchen as well as the impressive landscaped garden. To the front is ample off road parking. Available NOW,

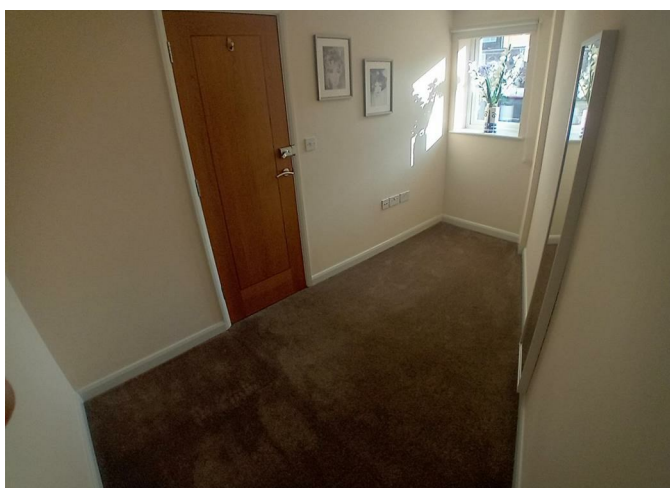
0



1



1







0

1

1

Energy Efficiency Rating		
	Current	Potential
Very energy efficient - lower running costs		
(92 plus) A		
(81-91) B		86
(69-80) C	76	
(55-68) D		
(39-54) E		
(21-38) F		
(1-20) G		
Not energy efficient - higher running costs		
England & Wales		EU Directive 2002/91/EC

Agents Note: Whilst every care has been taken to prepare these particulars, they are for guidance purposes only. All measurements are approximate and are for general guidance purposes only and whilst every care has been taken to ensure their accuracy, they should not be relied upon and potential buyers/tenants are advised to recheck the measurements

OFFICE ADDRESS

8a Regent Street
Leamington Spa
Warwickshire
CV32 5HO

OFFICE DETAILS

01926 354 400
leamington@handlesproperty.co.uk